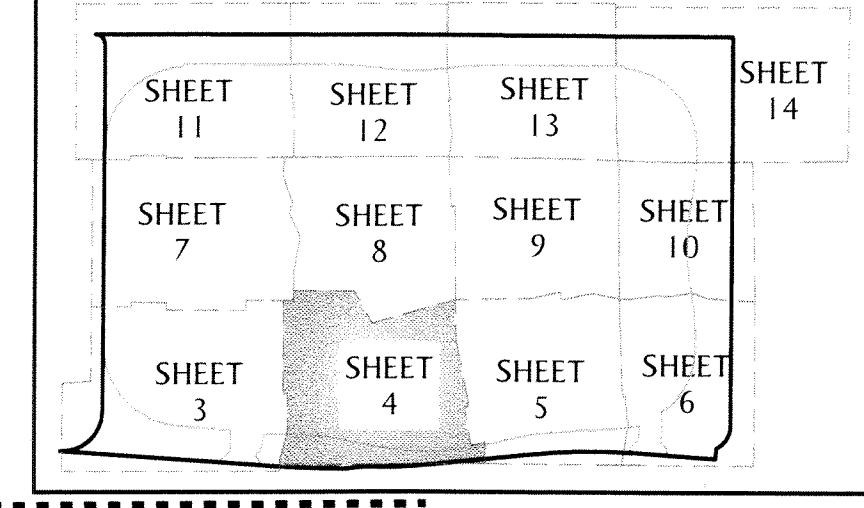


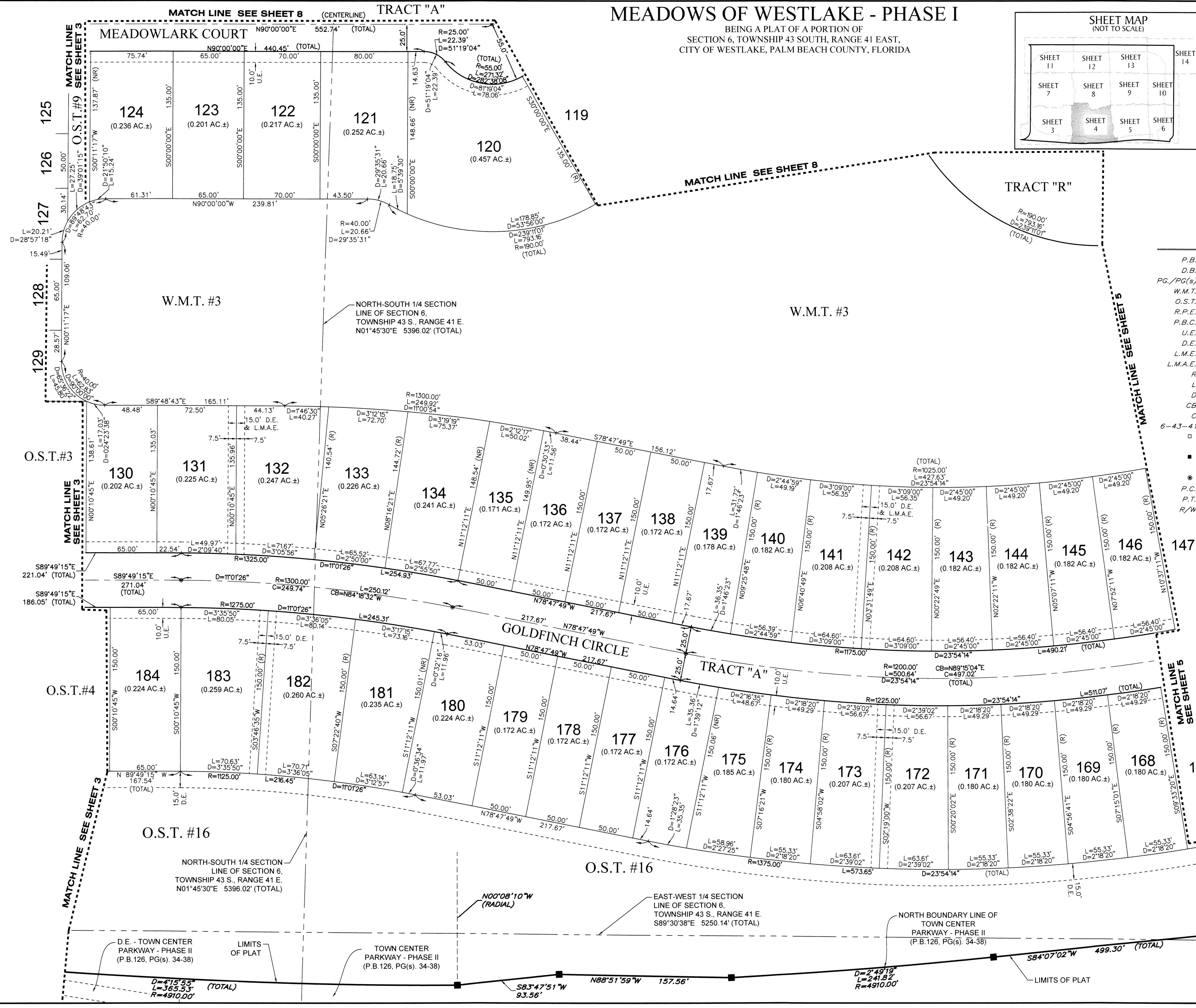
MEADOWS OF WESTLAKE - PHASE I

BEING A PLAT OF A PORTION OF
SECTION 6, TOWNSHIP 43 SOUTH, RANGE 41 EAST,
CITY OF WESTLAKE, PALM BEACH COUNTY, FLORIDA

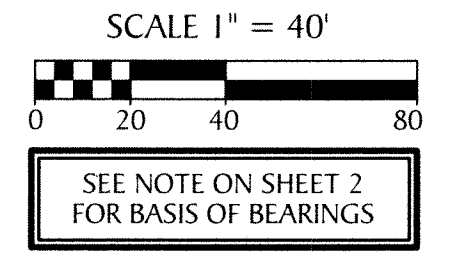
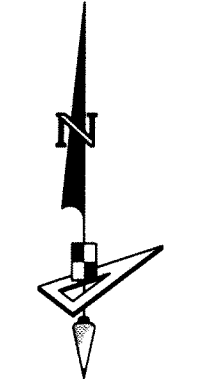
SHEET MAP
(NOT TO SCALE)



143



- LEGEND**
- P.B. ----- PLAT BOOK
 - D.B. ----- DEED BOOK
 - PG./PG(s) ----- PAGE(S)
 - W.M.T. ----- WATER MANAGEMENT TRACT
 - O.S.T. ----- OPEN SPACE TRACT
 - R.P.E. ----- RURAL PARKWAY EASEMENT
 - P.B.C. ----- PALM BEACH COUNTY
 - U.E. ----- UTILITY EASEMENT
 - D.E. ----- DRAINAGE EASEMENT
 - L.M.E. ----- LAKE MAINTENANCE EASEMENT
 - L.M.A.E. ----- LAKE MAINTENANCE ACCESS EASEMENT
 - R ----- RADIUS
 - L ----- ARCH LENGTH
 - Δ ----- DELTA ANGLE
 - CB ----- CHORD BEARING
 - C ----- CHORD
 - 6-43-41 ----- SECTION-TOWNSHIP-RANGE
 - ----- FOUND PERMANENT REFERENCE MONUMENT
 - ----- SET PERMANENT REFERENCE MONUMENT
 - ----- PERMANENT CONTROL POINT
 - P.C. ----- POINT OF CURVATURE
 - P.T. ----- POINT OF TANGENCY
 - R/W ----- RIGHT-OF-WAY



GeoPoint
Surveying, Inc.

4152 W. Blue Heron Blvd. Suite 103
Riviera Beach, FL 33404
Phone: (561) 444-2720
www.geopointsurvey.com
Licensed Business Number 187768